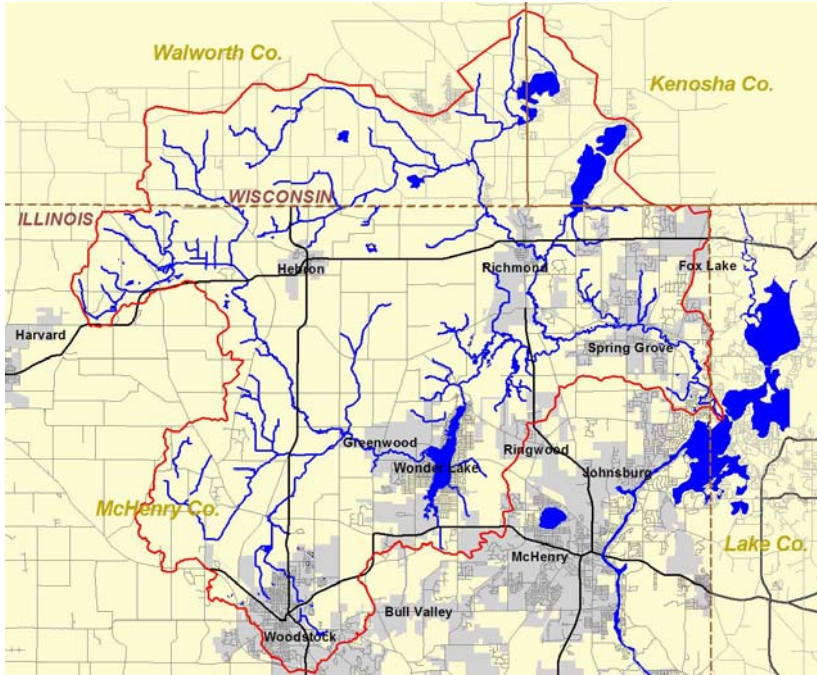


The Nippersink Creek Watershed Plan



February 2008

Prepared by:

Watershed Resource Consultants, Inc.

Fluid Clarity, Ltd

&

The Nippersink Creek Watershed Planning Committee

Foreword

Read this first – then get INVOLVED!

To those who live along Nippersink Creek, enjoy its scenic beauty, or recreate in its waters, the following statement is an obvious one: **Nippersink Creek is a precious resource worth protecting.** This tributary to the Fox River connects numerous natural areas, some of which are of the highest quality in all of McHenry County. Nippersink Creek provides many benefits:

- it is the backbone of our watershed ecosystem - the fish, plants, and animals that rely on the stream for habitat and sustenance;
- it provides numerous opportunities for recreation – fishing, canoeing, hiking, bird watching;
- it accepts and conveys our stormwater runoff – carrying away runoff from our homes, streets and stormwater infrastructure;
- it receives some of our treated wastewater, further cleansing the water as it flows over and through the biologically rich substrate that lines the channel.
- its natural systems assimilate our pollution and act as conduits for groundwater recharge, protecting the Fox River from further degradation while recharging groundwater supplies. The Fox River and our groundwater are without question two of the most important natural resources in our region, and perhaps our most threatened.

Collectively, these functions can be referred to as the “green infrastructure” or network of natural systems that support the health and integrity of the Nippersink Creek Ecosystem. Unlike human designed and constructed infrastructure, Nippersink Creek and its natural features are irreplaceable. Once they are gone, the functions they naturally provided cannot be easily replaced by manmade systems.

The conversion of land to urban / suburban uses is now occurring at an alarming rate in the Nippersink Creek Watershed. It is therefore critical that stakeholders in the watershed take action now to recognize, appreciate, and protect our natural resources in the Nippersink Creek Watershed.

The Nippersink Creek Watershed Plan is intended to provide watershed stakeholders with a framework and the direction needed to protect critical areas and minimize the negative impacts of human activities to Nippersink Creek and its green infrastructure. This Plan is an advisory document to be used by all stakeholders in the watershed; from municipal officials and their staff, developers, not-for-profit land stewardship organizations, and private landowners.

Acknowledgements

The Nippersink Creek Watershed Plan was prepared utilizing funding from the U.S. Environmental Protection Agency, Section 319 of the Clean Water Act, distributed through the Illinois Environmental Protection Agency.

The following organizations have contributed information, staff time, and / or funding to prepare this watershed plan:

- Nippersink Creek Watershed Planning Committee
- McHenry County Defenders
- McHenry County Soil and Water Conservation District
- McHenry County Conservation District
- Sierra Club, Illinois Chapter
- Land Conservancy of McHenry County
- City of Woodstock
- Village of Wonder Lake
- Village of Richmond
- Village of Ringwood
- USDA Natural Resource Conservation Service
- U.S. Army Corps of Engineers
- Fox River Ecosystem Partnership
- Friends of the Fox River
- Illinois Department of Natural Resources
- McHenry County Department of Planning & Development

Technical analysis and report preparation was performed by Randolph Stowe and Rob Linke of Watershed Resource Consultants, Inc. Marion Kessy of Fluidclarity, Ltd provided the pollutant loading analysis. Contract administration was performed by the Chicago Metropolitan Agency for Planning (formerly Northeastern Illinois Planning Commission).

The authors wish to thank all those who contributed to the content and review of this report.



Nippersink Creek Watershed Planning Committee

c/o McHenry County Soil & Water Conservation District
1648 S. Eastwood Drive,
Woodstock, IL 60098
(815) 338-0099 x3

Table of Contents

Foreword		i
Acknowledgements		ii
I. Introduction		
1.1	Watershed Overview	1
1.2	Stream and Water Quality Ratings	2
1.3	Existing and Future Watershed Protection Challenges	3
1.4	Impetus for an Updated Watershed Plan	5
1.5	Watershed Planning – A USEPA Perspective	6
1.6	Nippersink Creek Watershed Plan Organization	7
II. Nippersink Creek Watershed Summary		
2.1	Natural Resource	10
2.1.1	Landscape Resources	10
2.1.2	Biological Resources	20
2.1.3	Water Quality	23
2.2	Human Resources: Population and Land Uses	23
2.2.1	Population	23
2.2.2	Development Patterns & Land Use Changes	24
2.2.3	Land Use	25
2.3	Watershed Impacts & Impairments	26
2.3.1	Existing Impacts & Impairments	26
2.3.1.1	Watershed Impairment Causes Not Listed on the IEPA 303(d) List	27
2.3.2	Future Impacts & Impairments	32
III. Pollutant Loading Analysis		
3.1	Pollutants of Concern	35
3.1.1	Pollutant Loading Analysis Approach	35
3.1.2	Pollutant Loading Analysis Methodology	36
3.2	Pollutant Loading Results and Pollutant Reduction Strategies or BMP's	39
3.2.1	Runoff Volume	39
3.2.2	Best Management Practices for Runoff Reduction	39
3.2.3	Nippersink Creek Pollutant Loading Results	39
3.3	Pollutant Load Reduction	43
3.3.1	Setting Pollutant Load Reductions Targets	43
3.3.2	Pollutant Load Reduction Strategies	44
3.4	BMP Selection	45

IV	Recommendations to Protect Watershed Resources	
4.1	Watershed Recommendations Overview	49
4.2	Watershed Plan Objectives	49
4.3	General Watershed Plan Recommendations	51
4.3.1	Water Quality Monitoring (GWR-1)	52
4.3.2	Nutrient Management Planning (GWR-2)	56
4.3.3	Land Acquisition / Easements (GWR-3)	56
4.3.4	Conservation Design / Green Infrastructure (GWR-4)	59
4.3.5	Changing the Way We Manage Stormwater (GWR-5)	61
4.3.6	Minimize the Impacts of Wastewater Treatment (GWR-6)	64
4.3.7	Improved Controls on Non-point Source Pollution (GWR-7)	66
4.3.8	Conducting Public Education and Outreach (GWR-8)	66
4.3.9	Implementing a Part-time Watershed Manager Position (GWR-9)	67
4.3.10	Social Science Research (GWR-10)	68
4.4	Summary of Watershed Implementation Cost	69
4.5	Project Funding / Implementation	70
V.	<u>Lower Nippersink Creek Subwatershed Assessment</u>	
5.1	Subwatershed Characteristics	73
5.1.1	Subwatershed Location	73
5.1.2	Topography and Geology	75
5.1.3	Soil Characteristics	76
5.1.4	Pre-Settlement Vegetation	77
5.1.5	Subwatershed Drainage Features	79
5.1.6	Population	80
5.1.7	Land Cover	80
5.1.8	Land Use / Existing Watershed Development	83
5.1.9	Natural Resources	85
5.2	Analysis of Subwatershed Data and Problem Identification	88
5.2.1	Water Quality Data & Identified Problems	88
5.2.2	Flooding Problems	89
5.2.3	Projected Development & Growth	89
5.2.4	Natural Area Protection / Preservation Issues	90
5.3	Subwatershed-Specific Recommendations to Protect Watershed Resources	91
VI.	<u>Glacial Park / Tamarack Farms Subwatershed Assessment</u>	
6.1	Subwatershed Characteristics	99
6.1.1	Subwatershed Location	99
6.1.2	Topography and Geology	101
6.1.3	Soil Characteristics	102
6.1.4	Pre-Settlement Vegetation	103
6.1.5	Subwatershed Drainage Features	105
6.1.6	Population	106
6.1.7	Land Cover	107

6.1.8	Land Use / Existing Watershed Development	109
6.1.9	Natural Resources	111
6.2	Analysis of Subwatershed Data and Problem Identification	114
6.2.1	Water Quality Data & Identified Problems	114
6.2.2	Flooding Problems	115
6.2.3	Projected Development & Growth	115
6.2.4	Natural Area Protection / Preservation Issues	116
6.3	Subwatershed-Specific Recommendations to Protect Watershed Resources	117
<u>VII. Wonder Lake Subwatershed Assessment</u>		
7.1	Subwatershed Characteristics	123
7.1.1	Subwatershed Location	123
7.1.2	Topography and Geology	125
7.1.3	Soil Characteristics	126
7.1.4	Pre-Settlement Vegetation	126
7.1.5	Subwatershed Drainage Features	127
7.1.6	Population	130
7.1.7	Land Cover	130
7.1.8	Land Use / Existing Watershed Development	133
7.1.9	Natural Resources	135
7.2	Analysis of Subwatershed Data and Problem Identification	137
7.2.1	Water Quality Data	137
7.2.2	Flooding Problems	138
7.2.3	Wonder Lake Sedimentation	138
7.2.4	Shoreline Erosion	140
7.2.5	Projected Development & Growth	142
7.2.6	Natural Area Protection / Preservation Issues	145
7.3	Current Subwatershed Level Water Quality Planning Efforts	146
7.4	Subwatershed-Specific Recommendations to Protect Watershed Resources	150
<u>VIII. Vander Karr Creek Subwatershed Assessment</u>		
8.1	Subwatershed Characteristics	157
8.1.1	Subwatershed Location	157
8.1.2	Topography and Geology	159
8.1.3	Soil Characteristics	160
8.1.4	Pre-Settlement Vegetation	161
8.1.5	Subwatershed Drainage Features	163
8.1.6	Population	164
8.1.7	Land Cover	164
8.1.8	Land Use / Existing Watershed Development	167
8.1.9	Natural Resources	169
8.2	Analysis of Subwatershed Data and Problem Identification	172
8.2.1	Water Quality Data	172
8.2.2	Flooding Problems	172

8.2.3	Projected Development & Growth	173
8.2.4	Natural Area Protection / Preservation Issues	173
8.3	Subwatershed-Specific Recommendations to Protect Watershed Resources	174
<u>IV. Silver Creek Subwatershed Assessment</u>		
9.1	Subwatershed Characteristics	181
9.1.1	Subwatershed Location	181
9.1.2	Topography and Geology	183
9.1.3	Soil Characteristics	184
9.1.4	Pre-Settlement Vegetation	185
9.1.5	Subwatershed Drainage Features	186
9.1.6	Population	188
9.1.7	Land Cover	188
9.1.8	Land Use / Existing Watershed Development	191
9.1.9	Natural Resources	193
9.2	Analysis of Subwatershed Data and Problem Identification	196
9.2.1	Water Quality Data	196
9.2.2	Flooding Problems	196
9.2.3	Projected Development & Growth	197
9.2.4	Natural Area Protection / Preservation Issues	198
9.3	Subwatershed-Specific Recommendations to Protect Watershed Resources	198
<u>X. Slough Creek Subwatershed Assessment</u>		
10.1	Subwatershed Characteristics	205
10.1.1	Subwatershed Location	205
10.1.2	Topography and Geology	206
10.1.3	Soil Characteristics	209
10.1.4	Pre-Settlement Vegetation	210
10.1.5	Subwatershed Drainage Features	211
10.1.6	Population	212
10.1.7	Land Cover	213
10.1.8	Land Use / Existing Watershed Development	215
10.1.9	Natural Resources	218
10.2	Analysis of Subwatershed Data and Problem Identification	220
10.2.1	Water Quality Data	220
10.2.2	Flooding Problems	220
10.2.3	Projected Development & Growth	220
10.2.4	Natural Area Protection / Preservation Issues	222
10.3	Subwatershed-Specific Recommendations to Protect Watershed Resources	223

XI. Bailey Woods Subwatershed Assessment

11.1	Subwatershed Characteristics	229
11.1.1	Subwatershed Location	229
11.1.2	Topography and Geology	231
11.1.3	Soil Characteristics	232
11.1.4	Pre-Settlement Vegetation	233
11.1.5	Subwatershed Drainage Features	234
11.1.6	Population	235
11.1.7	Land Cover	235
11.1.8	Land Use / Existing Watershed Development	238
11.1.9	Natural Resources	239
11.2	Analysis of Subwatershed Data and Problem Identification	242
11.2.1	Water Quality Data	242
11.2.2	Flooding Problems	243
11.2.3	Projected Development & Growth	243
11.2.4	Natural Area Protection / Preservation Issues	243
11.3	Subwatershed-Specific Recommendations to Protect Watershed Resources	244

XII. Nippersink Headwaters Subwatershed Assessment

12.1	Subwatershed Characteristics	249
12.1.1	Subwatershed Location	249
12.1.2	Topography and Geology	251
12.1.3	Soil Characteristics	253
12.1.4	Pre-Settlement Vegetation	254
12.1.5	Subwatershed Drainage Features	255
12.1.6	Population	256
12.1.7	Land Cover	256
12.1.8	Land Use / Existing Watershed Development	258
12.1.9	Natural Resources	261
12.2	Analysis of Subwatershed Data and Problem Identification	264
12.2.1	Water Quality Data	264
12.2.2	Flooding Problems	265
12.2.3	Projected Development & Growth	265
12.2.4	Natural Area Protection / Preservation Issues	265
12.3	Subwatershed-Specific Recommendations to Protect Watershed Resources	266

XIII. North Branch Nippersink Subwatershed Assessment

13.1	Subwatershed Characteristics	273
13.1.1	Subwatershed Location	273
13.1.2	Topography and Geology	275
13.1.3	Soil Characteristics	276
13.1.4	Pre-Settlement Vegetation	277
13.1.5	Subwatershed Drainage Features	278
13.1.6	Population	279
13.1.7	Land Cover	279
13.1.8	Land Use / Existing Watershed Development	281
13.1.9	Natural Resources	283
13.2	Analysis of Subwatershed Data and Problem Identification	287
13.2.1	Water Quality Data	287
13.2.2	Flooding Problems	288
13.2.3	Projected Development & Growth	288
13.2.4	Natural Area Protection / Preservation Issues	290
13.3	Subwatershed-Specific Recommendations to Protect Watershed Resources	292

XIV. Lower Elizabeth Lake Drain Subwatershed Assessment

14.1	Subwatershed Characteristics	299
14.1.1	Subwatershed Location	299
14.1.2	Topography and Geology	301
14.1.3	Soil Characteristics	302
14.1.4	Vegetation	303
14.1.5	Subwatershed Drainage Features	304
14.1.6	Population	305
14.1.7	Land Cover	305
14.1.8	Land Use / Existing Watershed Development	308
14.1.9	Natural Resources	310
14.2	Analysis of Subwatershed Data and Problem Identification	313
14.2.1	Water Quality Data	313
14.2.2	Flooding Problems	314
14.2.3	Projected Development & Growth	314
14.2.4	Natural Area Protection / Preservation Issues	314
14.3	Subwatershed-Specific Recommendations to Protect Watershed Resources	315

XV. <u>Hebron Peatlands Subwatershed Assessment</u>		
15.1	Subwatershed Characteristics	321
15.1.1	Subwatershed Location	321
15.1.2	Topography and Geology	323
15.1.3	Soil Characteristics	324
15.1.4	Pre-Settlement Vegetation	325
15.1.5	Subwatershed Drainage Features	326
15.1.6	Population	327
15.1.7	Land Cover	327
15.1.8	Land Use / Existing Watershed Development	329
15.1.9	Natural Resources	330
15.2	Analysis of Subwatershed Data and Problem Identification	334
15.2.1	Water Quality Data	334
15.2.2	Flooding Problems	334
15.2.3	Projected Development & Growth	334
15.2.4	Natural Area Protection / Preservation Issues	335
15.3	Subwatershed-Specific Recommendations to Protect Watershed Resources	336
XVI. <u>Wisconsin Subwatershed's Overview</u>		
16.1	Subwatershed Location	343
16.1.1	Zenda Headwaters Subwatershed	344
16.1.2	Upper North Branch Nippersink Creek Subwatershed	347
16.1.3	Elizabeth Lake Subwatershed	349
16.2	Wisconsin Subwatersheds Planning and Growth Issues	353
16.2.1	Point Source Discharges	354
16.3	Subwatershed-Specific Recommendations to Protect Water Resources	355
XVII. <u>Protecting the Nippersink Creek's Green Infrastructure</u>		
17.1	What is a Green Infrastructure Plan?	359
17.2	Need for a Green Infrastructure Plan	360
17.3	Delineating the Green Infrastructure Boundary	363
17.4	Guidelines for Interfacing with and Utilizing the Green Infrastructure	368
17.5	Implementing the Green Infrastructure Plan	368
17.5.1	Suggested Ordinance & Zoning Revisions	369
17.5.2	Landowner Outreach	370
17.5.2.1	Developers	370
17.5.2.2	Private Landowners	370

XVIII Public Outreach & Education Programs

18.1	Summary of Existing Programs	371
18.1.1	Nippersink Creek Watershed Planning Committee	371
18.1.2	McHenry County Defenders	371
18.1.3	McHenry-DuPage Soil & Water Conservation District	372
18.1.4	The Land Conservancy of McHenry County	372
18.1.5	McHenry County Conservation District	374
18.1.6	Friends of the Fox River	374
18.1.7	Fox River Ecosystem Partnership	375
18.1.8	McHenry County	375
18.2	Summary of Outreach During the Watershed Plan Update	376
18.3	Education & Outreach Recommendations	377

XIX Measuring Watershed Plan Success

19.1	Evaluating Plan Performance	379
19.2	Measuring Success	381
19.3	Suggested Milestones	383

XX References

20.1	Watershed Plan References	387
20.2	Watershed Protection References & Resources	389
20.2.1	Organizations / Agencies	389
20.2.2	Publications	390
20.2.3	Internet-based References	390
20.2.4	Resources Used in Preparation of GIS Data Layers	391
20.2.5	Resources Used in Preparation of Pollutant Loading Modeling	392

XXI Appendices

21.1	Assignment of Land Use Categories for GWLF Analysis	
21.2	Detailed Pollutant Loads	
21.3	Meeting Minutes Of Nippersink Creek Watershed Planning Committee	
21.4	Compact Disk containing watershed maps posted at www.nippersink.org	

Tables

Table 2.1	Nippersink Creek Watershed Geological Summary	12
Table 2.2	Chain O' Lakes - Fox River Resource Rich Area Summary	15
Table 2.3	MCNAI Methodology	16
Table 2.4	2005 MCNAI Report Summary for Fox / Nippersink Watershed RRA	17
Table 2.5	1999 – 2001 NAQWA Fish Survey Data	21
Table 2.6	Threatened and Endangered Species of the Nippersink Watershed	22
Table 3.1	Annual Pollutant Load by Subwatershed	42
Table 3.2	Pollutant Contribution Index	43
Table 3.3	Water Quality Statistics Upstream of Wonder Lake	44

Table 4.1	IEPA Water Quality Sampling Stations in the Nippersink Creek Watershed	53
Table 4.2	Water Quality Monitoring Plan Recommendations	56
Table 4.3	Watershed Plan Implementation Cost Summary	70

Table 5.1	Pre-Settlement Land Cover Conditions	77
Table 5.2	1999 Land Cover for the Lower Nippersink Creek Subwatershed	81
Table 5.3	McHenry County 2005 Land Use in Lower Nippersink Creek Subwatershed	83
Table 5.4	Municipal Areas in the Lower Nippersink Creek Subwatershed	85
Table 5.5	MCCD Properties in the Lower Nippersink Creek Subwatershed	85
Table 5.6	Other Publicly Protected Land in the Lower Nippersink Creek Subwatershed	86
Table 5.7	McHenry County Natural Areas Inventory Sites in the Lower Nippersink Creek Subwatershed	86
Table 5.8	Mapped Wetlands in the Lower Nippersink Creek Subwatershed	86
Table 5.9	Threatened and Endangered Species in the Lower Nippersink Creek Subwatershed	87
Table 5.10	IEPA Water Quality Sampling Stations in the Lower Nippersink Creek Subwatershed	88
Table 5.11	BMP Selection & Associated Pollutant Load Reduction for the Lower Nippersink Creek Subwatershed	93
Table 5.12	Recommended Projects in the Lower Nippersink Creek Subwatershed	94

Table 6.1	Pre-Settlement Land Cover Conditions	103
Table 6.2	1999 Land Cover for the Glacial Park / Tamarack Farms Subwatershed	107
Table 6.3	McHenry County 2005 Land Use in Glacial Park / Tamarack Farms Subwatershed	109
Table 6.4	Municipal Areas in the Glacial Park / Tamarack Farms Subwatershed	111
Table 6.5	MCCD Properties in the Glacial Park / Tamarack Farms Subwatershed	111
Table 6.6	Other Publicly Protected Land in the Glacial Park / Tamarack Farms Subwatershed	112

Table 6.7	McHenry County Natural Areas Inventory Sites in the Glacial Park / Tamarack Farms Subwatershed	112
Table 6.8	Mapped Wetlands in the Glacial Park / Tamarack Farms Subwatershed	112
Table 6.9	Threatened and Endangered Species in the Glacial Park / Tamarack Farms Subwatershed	113
Table 6.10	IEPA Water Quality Sampling Stations in the Glacial Park / Tamarack Farms Subwatershed	114
Table 6.11	BMP Selection & Associated Pollutant Load Reduction for the Glacial Park / Tamarack Farms Subwatershed	120
Table 6.12	Recommended Projects in the Glacial Park / Tamarack Farms Subwatershed	121

Table 7.1	Pre-Settlement Land Cover Conditions	127
Table 7.2	1999 Land Cover for the Wonder Lake Subwatershed	131
Table 7.3	McHenry County 2005 Land Use in the Wonder Lake Subwatershed	133
Table 7.4	Municipal Areas in the Wonder Lake Subwatershed	133
Table 7.5	MCCD Properties in the Wonder Lake Subwatershed	135
Table 7.6	McHenry County Natural Areas Inventory Sites in the Wonder Lake Subwatershed	135
Table 7.7	Mapped Wetlands in the Wonder Lake Subwatershed	136
Table 7.8	Threatened and Endangered Species in the Wonder Lake Subwatershed	136
Table 7.9	IEPA Water Quality Sampling Stations near the Wonder Lake Subwatershed	137
Table 7.10	BMP Selection & Associated Pollutant Load Reduction for the Wonder Lake Subwatershed	153
Table 7.11	Recommended Projects in the Wonder Lake Subwatershed	154

Table 8.1	Pre-Settlement Land Cover Conditions of the Vander Karr Creek Subwatershed	161
Table 8.2	1999 Land Cover for the Vander Karr Creek Subwatershed	165
Table 8.3	McHenry County 2005 Land Use in the Vander Karr Creek Subwatershed	167
Table 8.4	Municipal Areas in the Vander Karr Creek Subwatershed	167
Table 8.5	MCCD Properties in the Vander Karr Creek Subwatershed	169
Table 8.6	McHenry County Natural Areas Inventory Sites in the Vander Karr Creek Subwatershed	169
Table 8.7	Other Publicly Protected Land in the Vander Karr Creek Subwatershed	170
Table 8.8	Mapped Wetlands in the Vander Karr Creek Subwatershed	170
Table 8.9	Threatened and Endangered Species in the Vander Karr Creek Subwatershed	171
Table 8.10	BMP Selection & Associated Pollutant Load Reduction for the Vander Karr Creek Subwatershed	177
Table 8.11	Recommended Projects in the Vander Karr Creek Subwatershed	178

Table 9.1	Pre-Settlement Land Cover Conditions of the Silver Creek Subwatershed	185
Table 9.2	1999 Land Cover for the Silver Creek Subwatershed	189
Table 9.3	McHenry County 2005 Land Use in the Silver Creek Subwatershed	191
Table 9.4	Municipal Areas in the Silver Creek Subwatershed	192
Table 9.5	MCCD Properties in the Silver Creek Subwatershed	193
Table 9.6	McHenry County Natural Areas Inventory Sites in the Silver Creek Subwatershed	194
Table 9.7	Mapped Wetlands in the Silver Creek Subwatershed	194
Table 9.8	Threatened and Endangered Species in the Silver Creek Subwatershed	195
Table 9.9	BMP Selection & Associated Pollutant Load Reduction for the Silver Creek Subwatershed	202
Table 9.10	Recommended Projects in the Silver Creek Subwatershed	203

Table 10.1	Pre-Settlement Land Cover Conditions of the Slough Creek Subwatershed	210
Table 10.2	1999 Land Cover for the Slough Creek Subwatershed	213
Table 10.3	McHenry County 2005 Land Use in the Slough Creek Subwatershed	215
Table 10.4	Municipal Areas in the Slough Creek Subwatershed	215
Table 10.5	MCCD Properties in the Slough Creek Subwatershed	218
Table 10.6	McHenry County Natural Areas Inventory Sites in the Slough Creek Subwatershed	218
Table 10.7	Mapped Wetlands in the Slough Creek Subwatershed	219
Table 10.8	Threatened and Endangered Species in the Slough Creek Subwatershed	219
Table 10.9	BMP Selection & Associated Pollutant Load Reduction for the Slough Creek Subwatershed	211
Table 10.10	Recommended Projects in the Slough Creek Subwatershed	212

Table 11.1	Pre-Settlement Land Cover Conditions of the Bailey Woods Subwatershed	233
Table 11.2	1999 Land Cover for the Bailey Woods Subwatershed	236
Table 11.3	McHenry County 2005 Land Use in the Bailey Woods Subwatershed	238
Table 11.4	Municipal Areas in the Bailey Woods Subwatershed	238
Table 11.5	MCCD Properties in the Bailey Woods Subwatershed	240
Table 11.6	McHenry County Natural Areas Inventory Sites in the Bailey Woods Subwatershed	240
Table 11.7	Mapped Wetlands in the Bailey Woods Subwatershed	241
Table 11.8	IEPA Water Quality Sampling Stations in the Bailey Woods Subwatershed	242
Table 11.9	BMP Selection & Associated Pollutant Load Reduction for the Bailey Woods Subwatershed	247
Table 11.10	Recommended Projects in the Bailey Woods Subwatershed	248

Table 12.1	Pre-Settlement Land Cover Conditions of the Nippersink Headwaters Subwatershed	253
Table 12.2	1999 Land Cover for the Nippersink Headwaters Subwatershed	256
Table 12.3	McHenry County 2005 Land Use in the Nippersink Headwaters Subwatershed	258
Table 12.4	Municipal Areas in the Nippersink Headwaters Subwatershed	259
Table 12.5	MCCD Properties in the Nippersink Headwaters Subwatershed	261
Table 12.6	McHenry County Natural Areas Inventory Sites in the Nippersink Headwaters Subwatershed	261
Table 12.7	Mapped Wetlands in the Nippersink Headwaters Subwatershed	263
Table 12.8	Threatened and Endangered Species in the Nippersink Headwaters Subwatershed	263
Table 12.9	BMP Selection & Associated Pollutant Load Reduction for the Nippersink Headwaters Subwatershed	254
Table 12.10	Recommended Projects in the Nippersink Headwaters Subwatershed	255

Table 13.1	Pre-Settlement Land Cover Conditions of the North Branch Nippersink Subwatershed	277
Table 13.2	1999 Land Cover for the North Branch Nippersink Subwatershed	279
Table 13.3	McHenry County 2005 Land Use in the North Branch Nippersink Subwatershed	281
Table 13.4	Municipal Areas in the North Branch Nippersink Subwatershed	283
Table 13.5	NPDES Point Source Discharges in the North Branch Nippersink Creek Subwatershed	283
Table 13.6	MCCD Properties in the North Branch Nippersink Subwatershed	284
Table 13.7	Other Publicly Protected Land in the North Branch Nippersink Creek Subwatershed	284
Table 13.8	McHenry County Natural Areas Inventory Sites in the North Branch Nippersink Subwatershed	284
Table 13.9	Mapped Wetlands in the North Branch Nippersink Subwatershed	285
Table 13.10	Threatened and Endangered Species in the North Branch Nippersink Subwatershed	285
Table 13.11	IEPA Water Quality Sampling Stations in the North Branch Nippersink Creek Subwatershed	287
Table 13.12	Summary of Village of Richmond Projected Development.	288
Table 13.13	BMP Selection & Associated Pollutant Load Reduction for the North Branch Nippersink Subwatershed	295
Table 13.14	Recommended Projects in the North Branch Nippersink Subwatershed	296

Table 14.1	Pre-Settlement Land Cover Conditions of the Lower Elizabeth Lake Drain Subwatershed	303
Table 14.2	1999 Land Cover for the Lower Elizabeth Lake Drain Subwatershed	306
Table 14.3	McHenry County 2005 Land Use in the Lower Elizabeth Lake Drain Subwatershed	308
Table 14.4	Municipal Areas in the Lower Elizabeth Lake Drain Subwatershed	310
Table 14.5	MCCD Properties in the Lower Elizabeth Lake Drain Subwatershed	310
Table 14.6	McHenry County Natural Areas Inventory Sites in the Lower Elizabeth Lake Drain Subwatershed	311
Table 14.7	Mapped Wetlands in the Lower Elizabeth Lake Drain Subwatershed	311
Table 14.8	Threatened and Endangered Species in the Lower Elizabeth Lake Drain Subwatershed	312
Table 14.9	BMP Selection & Associated Pollutant Load Reduction for the Lower Elizabeth Lake Drain Subwatershed	318
Table 14.10	Recommended Projects in the Lower Elizabeth Lake Drain Subwatershed	319

Table 15.1	Pre-Settlement Land Cover Conditions of the Hebron Peatlands Subwatershed	325
Table 15.2	1999 Land Cover for the Hebron Peatlands Subwatershed	327
Table 15.3	McHenry County 2005 Land Use in the Hebron Peatlands Subwatershed	329
Table 15.4	Municipal Areas in the Hebron Peatlands Subwatershed	331
Table 15.5	NPDES Point Source Discharges in the Hebron Peatlands Subwatershed	331
Table 15.6	Other Publicly Protected Land in the Hebron Peatlands Subwatershed	332
Table 15.7	McHenry County Natural Areas Inventory Sites in the Hebron Peatlands Subwatershed	332
Table 15.8	Mapped Wetlands in the Hebron Peatlands Subwatershed	332
Table 15.9	Threatened and Endangered Species in the Hebron Peatlands Subwatershed	333
Table 15.10	BMP Selection & Associated Pollutant Load Reduction for the Hebron Peatlands Subwatershed	339
Table 15.11	Recommended Projects in the Hebron Peatlands Subwatershed	340

Table 16.1	NPDES Point Source Discharges within the Wisconsin Subwatersheds	354
Table 16.2	BMP Selection & Associated Pollutant Load Reduction For Wisconsin Subwatersheds	357
Table 16.3	Recommended Projects within the Wisconsin Subwatersheds	358

Table 19.1	Nippersink Creek Watershed Plan Milestone Timeframes	380

Figures

Figure 1.1	Watershed Location Map	1
Figure 1.2	Subwatershed Location Map	7

Figure 2.1	Landforms of the Fox River Basin	10
Figure 2.2	Vegetation of the Nippersink Creek Watershed – Pre-European Settlement	13
Figure 2.3	Hydric Soils of the Nippersink Creek Watershed	18
Figure 2.4	Mapped Wetlands of the Nippersink Creek Watershed	19
Figure 2.5	Municipalities in the Nippersink Creek Watershed	24
Figure 2.6	1999 Land Use Cover in the Nippersink Creek Watershed	25

Figure 4.1	Water Quality Sampling Stations in the Nippersink Creek Watershed	55

Figure 5.1	Lower Nippersink Creek Subwatershed Location Map	73
Figure 5.2	Lower Nippersink Creek Subwatershed Map	74
Figure 5.3	USGS Topographic Map of the Lower Nippersink Creek Subwatershed	75
Figure 5.4	Hydric Soils Map for the Lower Nippersink Creek Subwatershed	76
Figure 5.5	Pre-settlement Vegetation for the Lower Nippersink Creek Subwatershed	78
Figure 5.6	1999-2000 Land Cover Map for Lower Nippersink Creek Subwatershed	82
Figure 5.7	2005 McHenry County Land Use Map for Lower Nippersink Creek Subwatershed	84
Figure 5.8	Future Development in the Lower Nippersink Subwatershed	89
Figure 5.9	Lower Nippersink Subwatershed Site Recommendations Map	93

Figure 6.1	Glacial Park / Tamarack Farms Subwatershed Location Map	99
Figure 6.2	Glacial Park / Tamarack Farms Subwatershed Map	100
Figure 6.3	USGS Topographic Map of the Glacial Park / Tamarack Farms Subwatershed	101
Figure 6.4	Hydric Soils Map for the Glacial Park/ Tamarack Farms Subwatershed	102
Figure 6.5	Pre-settlement Vegetation for the Glacial Park / Tamarack Farms Subwatershed	104
Figure 6.6	Tryon Creek Area of Interest	105
Figure 6.7	1999-2000 Land Cover Map for Glacial Park / Tamarack Farms Subwatershed	108
Figure 6.8	2005 McHenry County Land Use Map for Glacial Park / Tamarack Farms Subwatershed	110
Figure 6.9	Glacial Park / Tamarack Farms Subwatershed Site Recommendations Map	119

Figure 7.1	Wonder Lake Subwatershed Location Map	123
Figure 7.2	Wonder Lake Subwatershed Map	124
Figure 7.3	USGS Topographic Map of the Wonder Lake Subwatershed	125
Figure 7.4	Hydric Soils Map for the Wonder Lake Subwatershed	126
Figure 7.5	Pre-settlement Vegetation for the Wonder Lake Subwatershed	127
Figure 7.6	1999-2000 Land Cover Map for the Wonder Lake Subwatershed	132
Figure 7.7	2005 McHenry County Land Use Map for the Wonder Lake Subwatershed	134
Figure 7.8	Bathymetry of Wonder Lake (1994)	139
Figure 7.9	Wonder Lake Shoreline Erosion Inventory	141
Figure 7.10	Future Development in the Wonder Lake Subwatershed	142
Figure 7.11	Conceptual Site Plan for the Thatcher Meadows Development	143
Figure 7.12	Conceptual Phase One Plan for Dredging Wonder Lake	148
Figure 7.13	Evaluation of Potential Dredging Sediment De-Watering Sites	149
Figure 7.14	Wonder Lake Subwatershed Site Recommendations Map	151

Figure 8.1	Vander Karr Creek Subwatershed Location Map	157
Figure 8.2	Vander Karr Creek Subwatershed Map	158
Figure 8.3	USGS Topographic Map of the Vander Karr Creek Subwatershed	159
Figure 8.4	Hydric Soils Map for the Vander Karr Creek Subwatershed	160
Figure 8.5	Pre-settlement Vegetation for the Vander Karr Creek Subwatershed	162
Figure 8.6	1999-2000 Land Cover Map for Vander Karr Creek Subwatershed	166
Figure 8.7	2005 McHenry County Land Use Map for Vander Karr Creek Subwatershed	168
Figure 8.8	Vander Karr Creek Subwatershed Site Recommendations Map	176

Figure 9.1	Silver Creek Subwatershed Location Map	181
Figure 9.2	Silver Creek Subwatershed Map	182
Figure 9.3	USGS Topographic Map of the Silver Creek Subwatershed	183
Figure 9.4	Hydric Soils Map for the Silver Creek Subwatershed	184
Figure 9.5	Pre-settlement Vegetation for the Silver Creek Subwatershed	185
Figure 9.6	1999-2000 Land Cover Map for Silver Creek Subwatershed	190
Figure 9.7	2005 McHenry County Land Use Map for Silver Creek Subwatershed	192
Figure 9.8	Potential Development in the Silver Creek Subwatershed	197
Figure 9.9	Silver Creek Subwatershed Site Recommendations Map	201

Figure 10.1	Slough Creek Subwatershed Location Map	205
Figure 10.2	Slough Creek Subwatershed Map	206
Figure 10.3	USGS Topographic Map of the Slough Creek Subwatershed	208
Figure 10.4	Hydric Soils Map for the Slough Creek Subwatershed	209
Figure 10.5	Pre-settlement Vegetation for the Slough Creek Subwatershed	210
Figure 10.6	1999-2000 Land Cover Map for Slough Creek Subwatershed	214
Figure 10.7	2005 McHenry County Land Use Map for Slough Creek Subwatershed	217
Figure 10.8	Future Development in the Slough Creek Subwatershed	221
Figure 10.9	Slough Creek Subwatershed Site Recommendations Map	210

Figure 11.1	Bailey Woods Subwatershed Location Map	229
Figure 11.2	Bailey Woods Subwatershed Map	230
Figure 11.3	USGS Topographic Map of the Bailey Woods Subwatershed	231
Figure 11.4	Hydric Soils Map for the Bailey Woods Subwatershed	232
Figure 11.5	Pre-settlement Vegetation for the Bailey Woods Subwatershed	233
Figure 11.6	1999-2000 Land Cover Map for Bailey Woods Subwatershed	237
Figure 11.7	2005 McHenry County Land Use Map for Bailey Woods Subwatershed	239
Figure 11.8	Bailey Woods Subwatershed Site Recommendations Map	246

Figure 12.1	Nippersink Headwaters Subwatershed Location Map	249
Figure 12.2	Nippersink Headwaters Subwatershed Map	250
Figure 12.3	USGS Topographic Map of the Nippersink Headwaters Subwatershed	252
Figure 12.4	Hydric Soils Map for the Nippersink Headwaters Subwatershed	253
Figure 12.5	Pre-settlement Vegetation for the Nippersink Headwaters Subwatershed	254
Figure 12.6	1999-2000 Land Cover Map for Nippersink Headwaters Subwatershed	257
Figure 12.7	2005 McHenry County Land Use Map for Nippersink Headwaters Subwatershed	259
Figure 12.8	McHenry County Natural Areas Inventory Map – Alden High Point ACC	262
Figure 12.9	Nippersink Headwaters Subwatershed Site Recommendations Map	269

Figure 13.1	North Branch Nippersink Creek Subwatershed Location Map	273
Figure 13.2	North Branch Nippersink Creek Subwatershed Map	274
Figure 13.3	USGS Topographic Map of the North Branch Nippersink Creek Subwatershed	275
Figure 13.4	Hydric Soils Map for the North Branch Nippersink Creek Subwatershed	276
Figure 13.5	Pre-settlement Vegetation for the North Branch Nippersink Creek Subwatershed	277
Figure 13.6	1999-2000 Land Cover Map for North Branch Nippersink Creek Subwatershed	280
Figure 13.7	2005 McHenry County Land Use Map for North Branch Nippersink Creek Subwatershed	282
Figure 13.8	Future Development in the North Branch Nippersink Creek Subwatershed	289
Figure 13.9	North Branch Nippersink Creek Subwatershed Site Recommendations Map	294

Figure 14.1	Lower Elizabeth Lake Drain Subwatershed Location Map	299
Figure 14.2	Lower Elizabeth Lake Drain Subwatershed Map	300
Figure 14.3	USGS Topographic Map of the Lower Elizabeth Lake Drain Subwatershed	301
Figure 14.4	Hydric Soils Map for the Lower Elizabeth Lake Drain Subwatershed	302
Figure 14.5	Pre-settlement Vegetation for the Lower Elizabeth Lake Drain Subwatershed	303
Figure 14.6	1999-2000 Land Cover Map for Lower Elizabeth Lake Drain Subwatershed	307
Figure 14.7	2005 McHenry County Land Use Map for Lower Elizabeth Lake Drain Subwatershed	309
Figure 14.8	Lower Elizabeth Lake Drain Subwatershed Site Recommendations Map	317

Figure 15.1	Hebron Peatlands Subwatershed Location Map	321
Figure 15.2	Hebron Peatlands Subwatershed Map	322
Figure 15.3	USGS Topographic Map of the Hebron Peatlands Subwatershed	323
Figure 15.4	Hydric Soils Map for the Hebron Peatlands Subwatershed	324
Figure 15.5	Pre-settlement Vegetation for the Hebron Peatlands Subwatershed	325
Figure 15.6	1999-2000 Land Cover Map for Hebron Peatlands Subwatershed	328
Figure 15.7	2005 McHenry County Land Use Map for Hebron Peatlands Subwatershed	330
Figure 15.8	Hebron Peatlands Subwatershed Site Recommendations Map	338

Figure 16.1	Location of Wisconsin Subwatersheds	343
Figure 16.2	USGS Topographic Map for the Zenda Headwaters Subwatershed	344
Figure 16.3	Aerial Photograph of the Zenda Headwaters Subwatershed	345
Figure 16.4	NRCS 2006 Land Cover of the Zenda Headwaters Subwatershed	346
Figure 16.5	USGS Topographic Map for the Upper North Branch Nippersink Subwatershed	347
Figure 16.6	Aerial Photograph of the Upper North Branch Nippersink Subwatershed	348
Figure 16.7	NRCS 2006 Land Cover of the Upper North Branch Nippersink Subwatershed	349
Figure 16.8	USGS Topographic Map for the Elizabeth Lake Subwatershed	350
Figure 16.9	Aerial Photograph of the Elizabeth Lake Subwatershed	351
Figure 16.10	NRCS 2006 Land Cover of the Elizabeth Lake Subwatershed	352
Figure 16.11	List of Wisconsin Planning Documents Reviewed	353

Figure 17.1	Green Infrastructure Corridor	362
Figure 17.2	Typical Residential Development Scenario	362
Figure 17.3	Nippersink Creek Green Infrastructure Plan	364
Figure 17.4	MCCD properties and streams buffered 100 feet	365
Figure 17.5	Figure 17.4 with FEMA 100-Year Floodplain (mapped + Zone A floodplains)	366
Figure 17.6	Figure 17.5 with HQH & HFV Wetlands and HQ Lakes buffered 100 feet	366
Figure 17.7	Figure 17.6 with remaining ADID identified wetlands larger than one acre	367
Figure 17.8	Proposed Green Infrastructure Boundary created from composite GIS datasets	367

Subwatershed Maps Available on www.nippersink.org.

Lower Nippersink Creek	Lower Nippersink Creek
Glacial Park / Tamarack Farms	Glacial Park/Tamarack Farms
Wonder Lake	Wonder Lake
Vander Karr Creek	Vander Karr Creek
Silver Creek	Silver Creek
Slough Creek	Slough Creek
Bailey Woods	Bailey Woods
Nippersink Headwaters	Nippersink Headwaters
North Branch Nippersink	North Branch Nippersink Creek
Lower Elizabeth Lake Drain	Lower Elizabeth Lake Drain
Hebron Peatlands	Hebron Peatlands
Wisconsin Subwatersheds	Wisconsin Subwatersheds
Green Infrastructure Map	Green Infrastructure Plan

Subwatershed Site Recommendation Maps Available on www.nippersink.org.

Lower Nippersink Creek	Lower Nippersink Creek
Glacial Park / Tamarack Farms	Glacial Park/Tamarack Farms
Wonder Lake	Wonder Lake
VanderKarr Creek	VanderKarr Creek
Silver Creek	Silver Creek
Slough Creek	Slough Creek
Bailey Woods	Bailey Woods
Nippersink Headwaters	Nippersink Headwaters
North Branch Nippersink	North Branch Nippersink Creek
Lower Elizabeth Lake Drain	Lower Elizabeth Lake Drain
Hebron Peatlands	Hebron Peatlands